

# Installation Guide

for all self-booting programs and tools from miray software

## 0. Preface

---

Miray software offers a series of programs, which can boot from floppy disk or CD. This especially includes the programs from the SAT series and the operating systems from miray.

Since these programs boot on their own, you do not need any proper installation. Though, an installation program is shipped to enable you to create a bootable floppy disk. Once you have created such a bootable floppy disk you can start the programs on any PC without any further installation.

Although the exact appearance of the installation programs differs slightly between our various products, their usage is the same for each of them. The following guide therefore does not refer to a specific product, but is aimed for all self-booting programs from miray software.

*This guide shows you in a few simple steps how to create a bootable floppy disk from the installation package you have received or downloaded and how to start the associated program.*

If you encounter any problems during installation, please contact our support team ([support@miray.de](mailto:support@miray.de)). Suggestions and improvements can be sent to [feedback@miray.de](mailto:feedback@miray.de).

## 1. Preparations

---

### 1.1. Bootable Disk

If you received the program already on a **bootable floppy disk** or on a **bootable CD**, no further disk creation is needed. In this case, please proceed with step "4. Start".

### 1.2. Software Package

If you received the program as an installation package (= software package), you will need a 3.5" floppy disk. Proceed with step "2. Installation Package" in the associated subsection, depending on whether you received the installation package as **.zip**, **.exe** or unpacked file.

### 1.3. Short Guide

The following short guide is sufficient in most cases. If you encounter any problems or prefer a more detailed installation guide, please continue with reading in the following chapters.

Insert a formatted 3.5"/1.44 MB floppy disk into floppy drive A:. Any data on this floppy disk will be deleted, so please make sure not to use a floppy disk with data you might need later on. Please start the installation program which comes with the installation package. Initiate the creation of the floppy disk within the installation program. After completion of this process you have a **bootable floppy disk**. You can boot the installed program from this floppy disk on any PC (from 386/486, consult the hardware specifications) you want to – see also “4. Start”.

## 2. Installation Package

---

### 2.1. Compressed Installation Package (.zip)

If you received the installation package in form of a packed file (.zip), you have to unpack it into a directory of your choice. Then you can start the associated installation program shipped with this package. Proceed with step “3. Installation Program”.

You can also try to start the installation from the application window of your unpacker (e.g. WinZIP). This works in most cases.

### 2.2. Self-Extracting Installation Package (.exe)

If you received a self-extracting installation package (.exe), you only have to execute the file. The installation process will be started immediately. Please proceed with step “3. Installation Program”.

### 2.3. Plain Installation Package

If you have an installation package that is not compressed, you can usually start the installation process directly from the directory the installation files are located in. If this does not work, copy all files into a directory of your choice. Execute the installation program directly from this directory and proceed with step “3. Installation Program”.

### 2.4. Disk-/ISO-Image & other Operating Systems

If you have a disk image of the program or if you're unable to use the installation program for windows, please create the bootable disk as described in “3.2. Creation from a Floppy Disk Image”, “3.3. Creation of a Bootable CD” or “3.4. Creation from an ISO Image”.

Almost any installation package contains the floppy disk image as .img-file with a size of 1.44 MB. If this is not the case, please contact [support@miray.de](mailto:support@miray.de).

## 3. Installation

### 3.1. Using the Installation Program

#### 3.1.1. Main Window

After starting the installation program the main window appears (fig. 1). This window contains 4 elements to control the installation and to display the current status:

- The **progress bar** (blue) shows, how far the creation of the floppy disk has proceeded.
- The **status bar** (orange) shows the current status and eventually encountered errors.
- The **start button** (green) starts the creation of a bootable floppy disk.
- To **exit** the installation program press the “Exit” button (red).



fig. 1: main window of the installation program

To start with the installation of a program, please insert a floppy into drive A:. Then click on “*Start Installation*”.

#### 3.1.2. Security Check

Prior to starting the installation, a security prompt (fig. 2) will appear. Please make sure that there is a floppy disk in drive A: and that there is no data on it you might need later on. All data on the floppy disk will be deleted during installation. If you’re ready to proceed with the installation, please click “OK”. The installation process will start immediately. By clicking “Cancel” you return to the main window without installation.

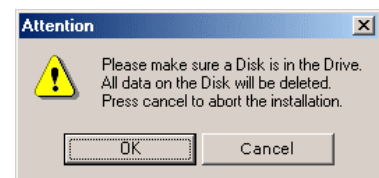


fig. 2: security prompt

#### 3.1.3. Error Message

If you receive an error message (fig. 3), the following reasons may be responsible:

- there is no floppy disk in floppy drive A:;
- the floppy disk inserted is write-protected or
- the floppy disk inserted is defective.

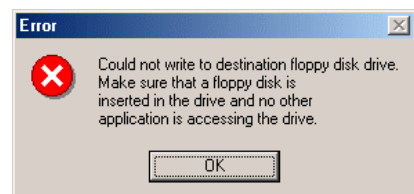


Abb. 3: error message

Please exchange the floppy disk or remove the write protection and confirm the error message by clicking on “OK”. Now you get back to the main window, where you can start over with the installation procedure as described in step “3.1.1. Main Window”.

### 3.1.4. Completion of Installation

After successful creation of a bootable floppy disk, you will receive a message in form of a dialog box (fig. 4). Confirm this box with "OK". Then click on "Exit" in the main window (fig. 1) to quit the installation program.

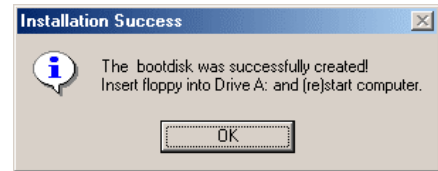


fig. 4: installation success

### 3.2. Creation from a Floppy Disk Image

You can create a bootable floppy disk simply via a floppy disk image. Since the installation program provided by miray software currently only runs with Windows, this method is recommended if you're using other operating systems. You can use any disk imaging program of your choice. The floppy disk image is always a 1.44 MB image for 3.5" floppy disks.

Under UNIX/Linux please use the installed tool `dd` (Syntax: `dd if=filename.img of=/dev/fd0`), where you have to replace "filename.img" with the name of the corresponding image file.

Please note that the floppy disk image only contains the program. Though using an operating system different than Windows, the complete installation package usually contains guides and other useful files.

If you have created a bootable floppy disk, please proceed with step "4. Start".

### 3.3. Creation of a Bootable CD

The image file described in "2.4. Diskette image" can also be used to create a bootable CD. Please pass this file as bootable image to your CD recording program. You have to set up the recording program to produce a bootable CD.

If you have created a bootable CD, please proceed with step "4. Start".

### 3.4. Creation from an ISO Image

If your installation package contains an ISO-image, you can use this with most CD recording programs to create a CD with. After completion of the burning process you have a bootable CD with the desired program on it.

If you have created a bootable CD, please proceed with step "4. Start".

## 4. Start

---

Please insert the bootable diskette or CD in the associated drive. Set up the BIOS of your Computer to boot from this CD- or diskette drive on startup. Then please shut down your computer and restart. The program will then be started automatically from diskette or CD.